

REPORTS TO OSCAR General Meeting 24 November 2022

6. Financial Report

6.1 Treasurer's Report:

BANK A/C #1 STATEMENT

This report is for the period 25th October 2022 to 22nd November 2022:

Cash Balance <u>25th October 2022</u>		\$ 1769.33
Receipts:	\$180.00	
Payments:	\$ 230.89	\$ (50.89)
Cash Balance 22 nd November 2022		\$ 1718.44

Receipt Details:

\$120 OSCAR 2 x organisation membership, \$60 - 6 x Individual memberships

Payment Details: \$230.89 Zoom Subscription

BANK A/C #2

This report is for the period 25th October 2022 to 22nd November 2022:

Cash Balance 25 th October 2022		\$5876.31
Receipts:	\$ 3.24	\$ 3.24
		\$5879.55
Payments:	\$ 0.00	\$ 0.00
Cash Balance 22 nd November 2022		\$5879.55

Receipts Details: \$6.38 Bank Interest

Payment Details: \$0

6.2 Accounts for payment:

BANK A/C # 1

GM Approval Required - Nil

Estimated/Actual Bank Balance after payment of items in 6.2 **\$1718.44**

BANK A/C # 2

Payment Details:

GM Approval Required - Nil

Estimated/Actual Bank Balance after payment of items in 6.2 **\$5879.55**

6.3 2022/2023 OSCAR Membership - Increase

Please note that membership fees as per approval granted at the 2021 AGM are now \$60 for organisations and remain \$10 for individuals. These are due and payable now

9.1 Standing Agenda items

a) **Airport Community Aviation Forum** – the forum only meets quarterly

b) **Climate Conference – A Climate for Change – an Unconventional Convention,**

c) **SEQCA – Planning Forum 15 October and 15 November 2022**

PowerPoint presentations from the forum can be found at:

<https://segalliance.org/conference-news/>

d) **QLGRA** – nil to report

e) **Transport CRG**

The following items were discussed at the 2 November TCRG meeting. More comprehensive information will be provided via the OSCAR website once the Council provides the meeting notes and associated presentations.

- Draft Southern Sunshine Coast Public Transport Strategy – community feedback (presentation by TMR)
- Beerwah to Maroochydore Rail Extension and Mass Transit Details Business Case (presentation by TMR)
- e-Bus fleet (presentation by Kinetic)
- European approaches to EV Charging facilities in public places (presentation by Paul William-Smith)
Provided insights from visit to Europe in July this year.

f) **Update re Buddina** (Lesley Dimmock) – nil report this month

g) **Twin Waters West Appeal** – Stockland has not lodged an Appeal

h) **Sekisui Appeal** – nil to report – awaiting the P&E court judgement

i) **Coolum West** – nil to report.

j) **PS 2024 development** – The OSCAR Planning Matters workshop of 7 October was well attended with active participation. We have agreed there is work to be done, but we need to revisit the timeframe for the ongoing work owing to a number of factors one of which is responding to the State Housing Summit on which we will report to the meeting and make our own recommendations from OSCAR to the State. The draft submission will be available by the end of the week (we hope).

k) **Biosphere**-The second Community Advisory Group (CAG) will meet on November 29.

I) Current SCRC and Noosa Engagement Activities SCRC and Noosa Shire Ordinary Meeting Reports

Proposed amendment Sunshine Coast Regional Council

Council is proposing an amendment to the Sunshine Coast Planning Scheme 2014 referred to as the Site Specific and Editorial Matters.

About the amendment

The purpose and general effect of the proposed Sunshine Coast Planning Scheme 2014 (Major Amendment) - Site Specific and Editorial Matters, is to:

- a. amend the zoning, maximum building height, local plan precincts/elements and/or planning scheme provisions relating to specific sites located in the Buderim, Maroochydore/Kuluin, Mooloolaba/Alexandra Headland, Peregian South, Sippy Downs, Woombye and Yandina Local plan areas, to:
 - i. reflect an existing development approval;
 - ii. better reflect existing or desired future land uses;
 - iii. respond to Council property-related matters or a Council resolution;
 - iv. respond to identified mapping anomalies; and
- b. address other editorial matters to improve the clarity and efficiency of the planning scheme.

The proposed amendment is subject to public consultation from **Monday 21 November 2022 to Monday 19 December 2022 (inclusive)**.

Full details re the Amendment can be found at:

[Site Specific and Editorial Matters | Have Your Say \(sunshinecoast.qld.gov.au\)](https://www.sunshinecoast.qld.gov.au/site-specific-and-editorial-matters)

I) Point Cartwright and La Balsa Park Master Plan

MEMBER UPDATE - Point Cartwright and Related Matters (PCCG Inc) Nov 2022

1. Update on Point Cartwright Master Plan

The final CRG was held on 25 October where consultants presented their draft findings. There were more Council staff members present than at any CRG meeting to date. It was a long afternoon with a lot of informative exchanges. The workshop was also very productive and instructive and staff were very engaged in the issues. The reports are not yet public. However, a consultant has been engaged to draft the Master Plan and work is already underway.

2. Update on Proposal for Conservation Park at Point Cartwright

The PCCG submitted to Council a paper petition with over 1600 signatures in support of the designation of a conservation park at Point Cartwright. The proposal seeks to have the site rezoned to an appropriate zoning of Environmental Management and Conservation to align with its significant intrinsic values. The merits of this proposal include:

- the presence of a critically endangered stand of littoral rainforest captured by the provisions of the national recovery plan for such stands.
- the presence of international migratory species of shorebirds on the rocky shores every summer

which are covered by multilateral International agreements.

- the presence of a global hotspot of diversity for Nudibranch species (600 out of known 300 worldwide occur in the lower estuary).
- the presence of the largest turtle hatchings of the endangered Loggerhead Turtles on the Sunshine Coast.
- the presence of rich Indigenous cultural heritage supported by a plethora historic and anthropological accounts dating back to early European records showing the site was the site of a large village with huts, and it was the home of much ceremonial and spiritual significance. Examples include rock art around the headland and middens along the beaches and the river.

The PCCG has released a public version of their Town Plan Rezoning Report submitted in support of a proposal for a conservation park at Point Cartwright. The report has been revised and updated to remove references to sensitive Kabi Kabi information previously included in their Council submission. This report can be sourced from numerous sources and will be available from OSCAR website soon. All members and interested public are encouraged to view the report to learn about the wonderful mix of nationally significant environmental attributes, ancient fossilised landscapes and rich Indigenous cultural heritage of the reserve.

3. Update on Proposed 60m Rock Wall Extension

TMR Stakeholder Reference Group (SRG)

A second SRG was held in October with numerous stakeholders from business, government and non government groups. The session was largely a continuation of the presentation provided by MSQ at the first SRG, but on this occasion there was a lot of technical detail provided on their preferred option of a 60m extension to the rock wall. Some discussion about the construction phase was held, whereby many of the key concerns raised were referred to consultant report which will be forthcoming. A timeline was presented indicating that once these reports were received, a community survey would be carried out and environmental approvals sought. SRG members express concerns about the proposal and the lack of clear options analysis (e.g. triple bottom line or quadruple bottom line assessments) or risk assessments of various options. Several community proposals were floated at the meeting as alternatives to the rock wall, including the maintenance of a Western channel. Requests for a third SRG were also made. TMR have since advised that a third SRG will be held to examine community submitted alternatives.

Following the October SRG, a number of local community groups prepared an alternate proposal to challenge the rationale and justification for a 60m extension to the rock wall. This proposal took the form of a Concept Plan and was submitted to Dept Transport and Maritime Safety Queensland with a request to evaluate and assess the merits of the concept plan by way of modelling. The principal aim of the concept plan is to encourage MSQ to examine "management solutions" rather than "infrastructure solutions" to the shoaling problem at the Mooloolaba Harbour. The concept plan is attached.

A number of key foundational concerns lie behind the state government's rush to construct a \$22M rock wall, and these include:

- a) there has not been sufficient consideration of the broad sand movement and distribution patterns along the coastline. The rock wall proposal has been developed as an engineering solution

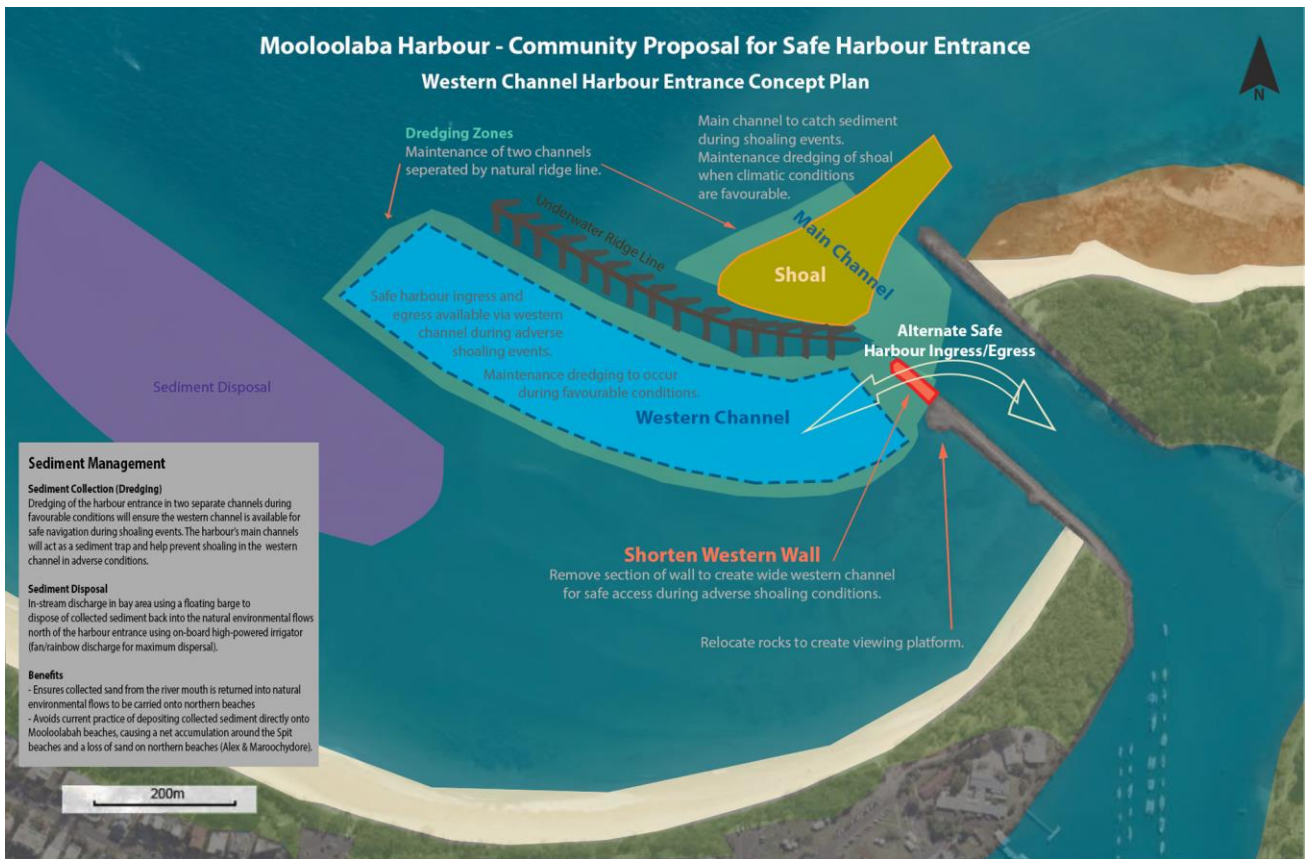
to the immediate problems which have been worsening at the river mouth, without sufficient regard for the broader sand transport mechanisms for the coastline between Caloundra and Yaroomba. Dr Javier Leon has advocated for no rock wall, better inter-agency management structures, and a holistic approach to sand management. The preference is to find management systems that do not rely on the construction of large antiquated engineering solutions which have been shown over many years not to work along the east coast of Australia and almost always cause significant downstream problems.

b) it would seem that MSQ has not adequately recognised the role that accumulating sediment within the Mooloolaba Bay (west of the harbour entrance) has been playing in the increasing frequency and severity of shoaling events across the harbour entrance over the past ten years. An essential practice when removing from the harbour entrance should be to return it into the natural northern drift to ensure sand continues to deposit on northern beaches. However, due to the extended practice of beach dumping, much sand has been removed from the natural sand transport systems, create a sand deficit on northern beach such as Alex and Maroochydore which have been starved of sand to the extent that barges are now bringing and up from Moreton Bay and dumping it in near shore sand dumping programs at Maroochydore. The sand that has been dumped on the beach at Mooloolaba has not re-entered the northerly drift, but has instead been recirculating within the bay and slowly filling the bay making it progressively shallower over time. It has been asserted that this is in fact the reason for the frequency and severity of shoaling of the river mouth - i.e. sediment in the bay is acting as a plug to stop blocking natural transport systems across the river mouth causing accumulation of sand in the harbour entrance.

c) in determining the preferred option of a 60m rock wall extension, no options analysis was conducted to evaluate risks and impacts in relation to environmental, social, economic or cultural heritage impacts. Since the instigation of the SRG, studies have now been commissioned to investigate the potential risks and impacts of the preferred 60m rock wall option only. No purely "management solutions" have been evaluated.

d) after the construction of the proposed \$22M 60m rock wall extension is completed, it seems there will still be a requirement for maintenance dredging to be conducted to a similar extent as happens at the moment (~ \$1M er annum). Given the significant changes proposed to existing natural features and aesthetic of the harbour entrance, along with potential risks and impacts of the rock wall solution, it is surprising that no evaluation of management-only solutions has been examined by MSQ. As an example, it was identified by stakeholders present at the SRG that part of the problem behind the recent shoaling events was the fact that dredge equipment was not able to respond to shoaling events as it was not capable of working in the sustained climatic conditions being experience earlier this year. A proposal was flagged by stakeholders that the use of a dredge capable of working in a wider range of weather conditions would negate the current problem of needing to wait until climatic conditions improve to start removing accumulated sediment.

e) the extensive construction impacts likely to be experienced across the suburbs of Buddina and Minyama from scores of trucks delivering rocks and other construction materials, or the impacts to the reserve itself from substantial changes to walkways and access points that facilitate heavy machinery, or the alterations to rocky shores to accomodate a barge ramp or the removal of vegetation on the site to accomodate storage of plant and equipment and raw materials.



Kind regards.

Quentin Brown (Point Cartwright Care Group)

9.3 Emerging issues – these will be considered as resources become available

a) Coaldrake Review of Integrity Issues in State Government – the final report from Professor Coaldrake can be found at:

<https://www.coaldrakereview.qld.gov.au/assets/custom/docs/coaldrake-review-final-report-28-june-2022.pdf>

b) OSCAR Logo – ongoing

c) SCRC Financial questions /issues – ongoing

d) Purpose of Sun Central given Lang Walker's involvement – +tive and -tive – ongoing

e) *SCRC classification and Management of Council Information* proposal –

f) Expenditure Caps for Local Government Elections Discussion paper – the OSCAR response is on the website at: [OSCAR-submission-Expenditure-Caps-Scheme-May-2022.pdf](https://www.coaldrakereview.qld.gov.au/assets/custom/docs/oscar-submission-expenditure-caps-scheme-may-2022.pdf)

g) Time and location of future meetings