

# Transport Community Reference Group

22 February 2023

# Agenda

- 1. Welcome, Apologies**
- 2. B2N (TMR)**
- 3. New Planning Scheme Preliminary Consultation Findings (Jason)**
- 4. New Planning Scheme Transport Elements Considerations (Matt)**
- 5. E-scooter Law Changes and Trial for SC (Rod)**
- 6. E-bus rollout update (Kinetic)**
- 7. General Business**



## Item 2 – Beerburrum to Nambour Rail Upgrade Project



## Item 3 – New Planning Scheme Preliminary Consultation Findings



## Item 4 – New Planning Scheme Transport Elements



# 2014 Planning Scheme – transport elements

## Part 1 About the Planning Scheme

Part 1 introduces the scheme and outlines legislative requirements

## Part 2 State Planning Provisions

Part 2 identifies the state planning provisions reflected in the planning scheme

## Part 3 Strategic Framework

The Strategic Framework sets the policy direction for the planning scheme

## Part 4 Local Government Infrastructure Plan

The Local Government Infrastructure Plan identifies council's plans for trunk infrastructure to service urban development efficiently

## Part 5 Tables of Assessment

Part 5 identifies the category of development and category of assessment and assessment benchmarks for assessable development and requirements for accepted development

## Part 6 Zones

Part 6 contains the zone codes for the 22 zones covering residential, centre, industry, open space and other zones

## Part 7 Local Plans

Part 7 contains the Local plan codes for each of the 27 local plan areas covering coastal urban areas, rural towns and villages

## Part 8 Overlays

Part 8 contains the Overlay codes for 13 overlays mapped in Schedule 2 (mapping)

## Part 9 Development Codes

The Development codes (e.g. use codes and other codes) provide assessment benchmarks for assessable development and requirements for accepted development.

## Part 10 Other Plans

Part 10 includes the Palmview Structure Plans

## Schedule 1 Definitions

Schedule 1 contains use and administrative definitions for the planning scheme

## Schedule 2 Mapping

Schedule 2 contains the maps relating to the strategic framework, zones, local plan precincts, overlays and structure plans that are applicable to the planning scheme area

## Schedule 3 Local Government Infrastructure Plan Mapping and Tables

Schedule 3 contains the local government infrastructure plan mapping and tables

## Schedule 4 Notations required under the Planning Act 2016

Schedule 4 includes a list of all notations required under the Planning Act 2016. This schedule may be updated from time to time to include new notations.

## Schedule 5 Designation of premises for development

Schedule 5 provides details of land designated for development of infrastructure. This schedule may be updated from time to time to note new designations.

## Schedule 6 Planning scheme policies

Schedule 6 contains the planning scheme policies that support the planning scheme

## Appendix 1 Index and glossary of abbreviations and acronyms

Appendix 1 includes a list and description of abbreviations and acronyms used within the planning scheme

## Appendix 2 Table of Amendments

Appendix 2 provides for a list of all amendments made to the planning scheme

LGIP Maps -  
Transport Network

SC6.17 PS Policy for  
Transport & Parking  
Code

3.5 Transport

4.4 Desired  
Standards of  
Service  
4.5 Plans for  
Trunk  
Infrastructure

8.2.11 Regional  
Infrastructure  
Overlay Code

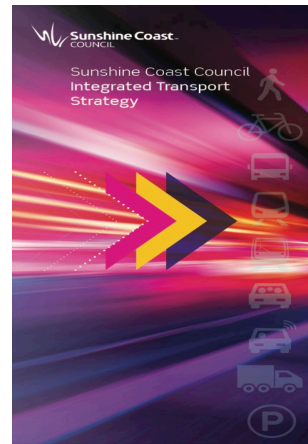
9.4.8 Transport &  
Parking Code -  
inc transport  
network maps

# Review of 2014 Planning Scheme Transport Elements

In preparation of a New Planning Scheme, Council engaged consulting experts to undertake a review of the 2014 Planning Scheme's Transport Elements (excluding LGIP which will be a separate process).

The review was focused on what transport elements require amendment or new provisions in light of key policy, planning, design, guidelines and standards perspective released since 2014. Key documents considered included:

- Council – Corporate Plan, Integrated Transport Strategy, Parking Management Plan, Environment and Liveability Strategy, LGIP, Road Safety Plan, Active Transport Plan
- State Govt – Planning Act 2016, State Planning Policy, SEQ Regional Plan, Regional Transport Plan, Walking Strategy, Code for Neighbourhood Design
- Other – Austroads guidance, IPWEAQ street design manual
- Stakeholder engagement (govt) and peak industry bodies
- Preliminary community consultation



# Context of review of 2014 Planning Scheme Transport Elements

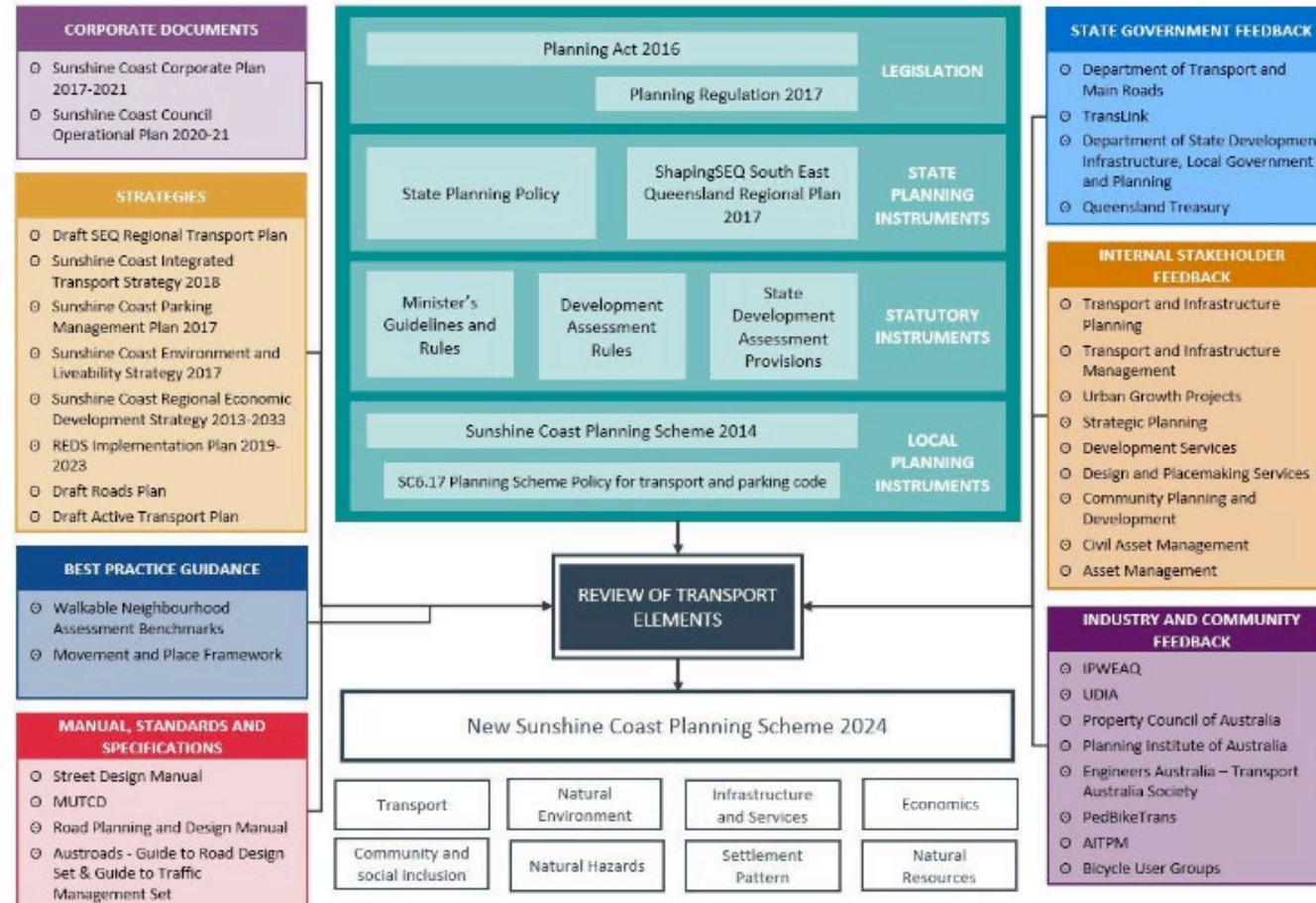


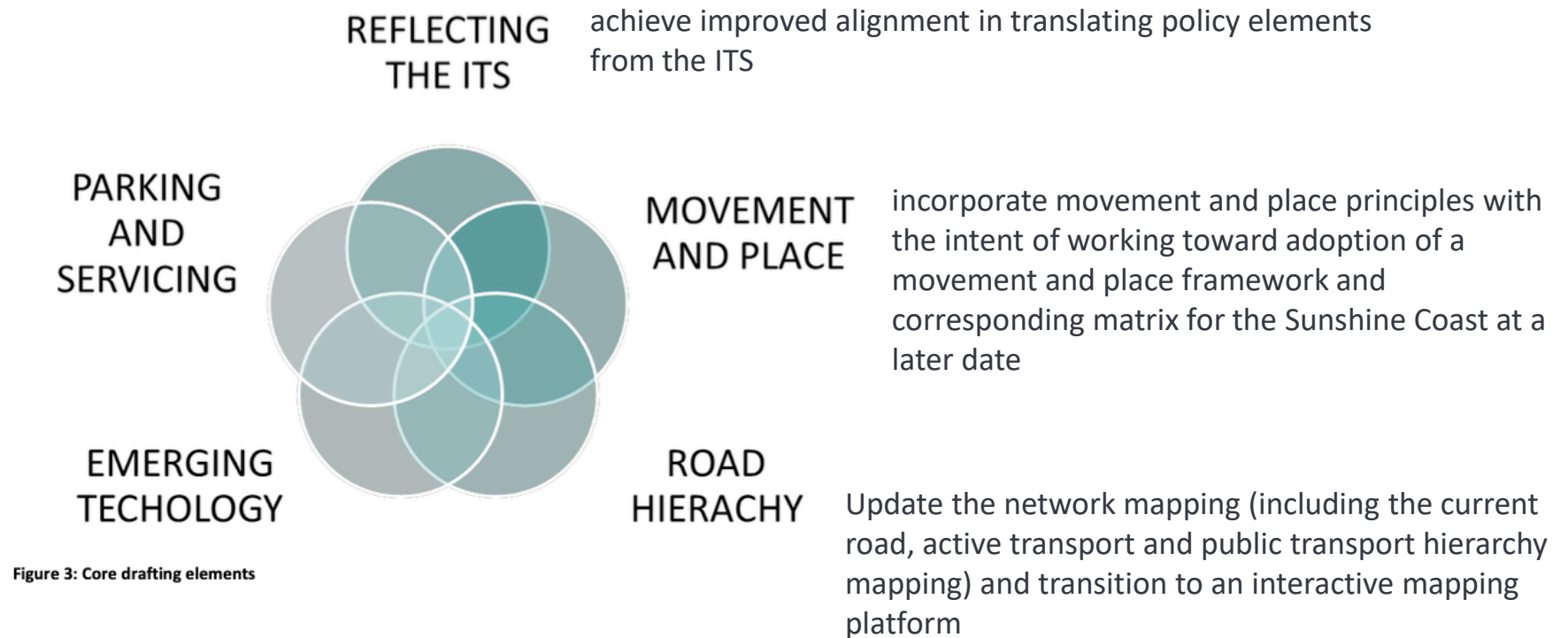
Figure 1: Context Of Review Of Transport Elements In Current Planning Scheme



# Priority areas for review of 2014 Planning Scheme Transport Elements

ensure that the parking (inc bicycle parking) and servicing provisions are contemporary and reflect the intent of the ITS.

better reflect the role of emerging technology in the transport system with a focus on electric vehicle parking (charging) bays and short-stay parking bays for ride-share vehicles and food delivery vehicles on private property and how new parking and servicing provisions can be incorporated.



# New Planning Scheme Transport Elements

## Strategic Framework

Intent to embed transport outcomes sought under the NPS as well as provide policy 'hooks' for transport elements and concepts that are more 'fluid' in nature. Focus has been on:

- Alignment with Integrated Transport Strategy's (ITS) objectives, strategy, directions and policy outcomes
- Provide a 'line of sight' between the Strategic Framework and the Overlay, Development Codes and Planning Scheme Policies
- Integrate movement and place principles
- Integrate and position for future smart mobility solutions (recognising much of it is market driven with ever-changing regulations).

# New Planning Scheme Transport Elements

## Transport and Parking Code

Intent is to ensure 'line of sight' to the updated Strategic Framework and ensure provisions in the Code are appropriate and defensible. Focus has been on:

- Refine car parking, shared parking, bicycle parking and service provisions based on desktop review and evidence-based surveys
- Increase bicycle and EOT provisions for select land use types to encourage mode shift
- Better align motorcycle/scooter parking with industry standards and expectations
- New Performance Outcome Table for short stay parking and electric vehicle charging bays for select land use types
- Update and transition transport network maps to Interactive Mapping
  - Road Hierarchy to be updated to 2041
  - Active Transport Network to be updated to 2041
  - Public Transport Network to align with State Government planning to 2041

# New Planning Scheme Transport Elements

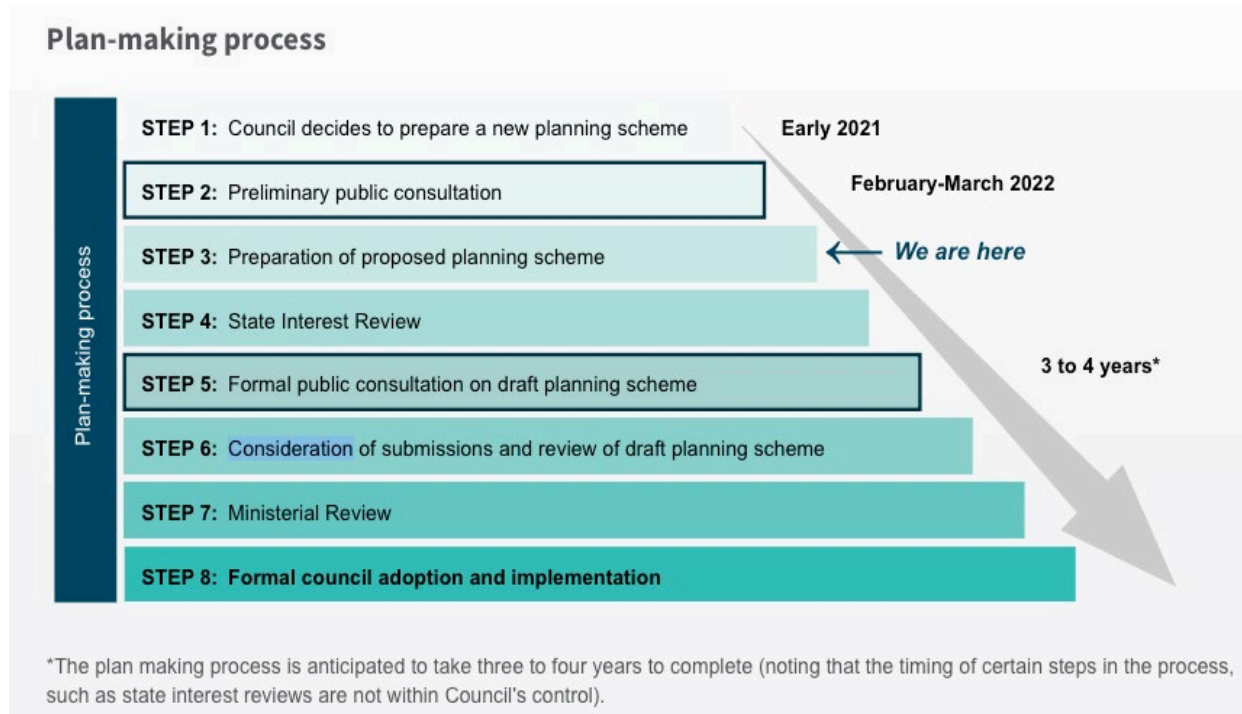
## Planning Scheme Policy for Transport and Parking Code

Intent is to ensure 'line of sight' to the updated Strategic Framework and Code and alignment with contemporary industry standards. Focus will be on:

- Updated planning scheme policy text to align with Strategic Framework and ITS directions
- Updated tables proposed to reflect:
  - Level of Traffic Stress scoring of walking and riding infrastructure
  - Alignment with safe system approach to vehicle speeds on select road hierarchy to maximise safe walking and riding environments
- Updated standard drawings to reflect:
  - best practice (e.g. Qld Selection and Design of Cycle Tracks Guideline, IPWEAQ, Austroads and others)
  - Includes typical street and road standard treatments for cross sections and intersections
  - Develop retrofit drawings for use in infill and brownfield development sites.



# New Planning Scheme Transport Elements

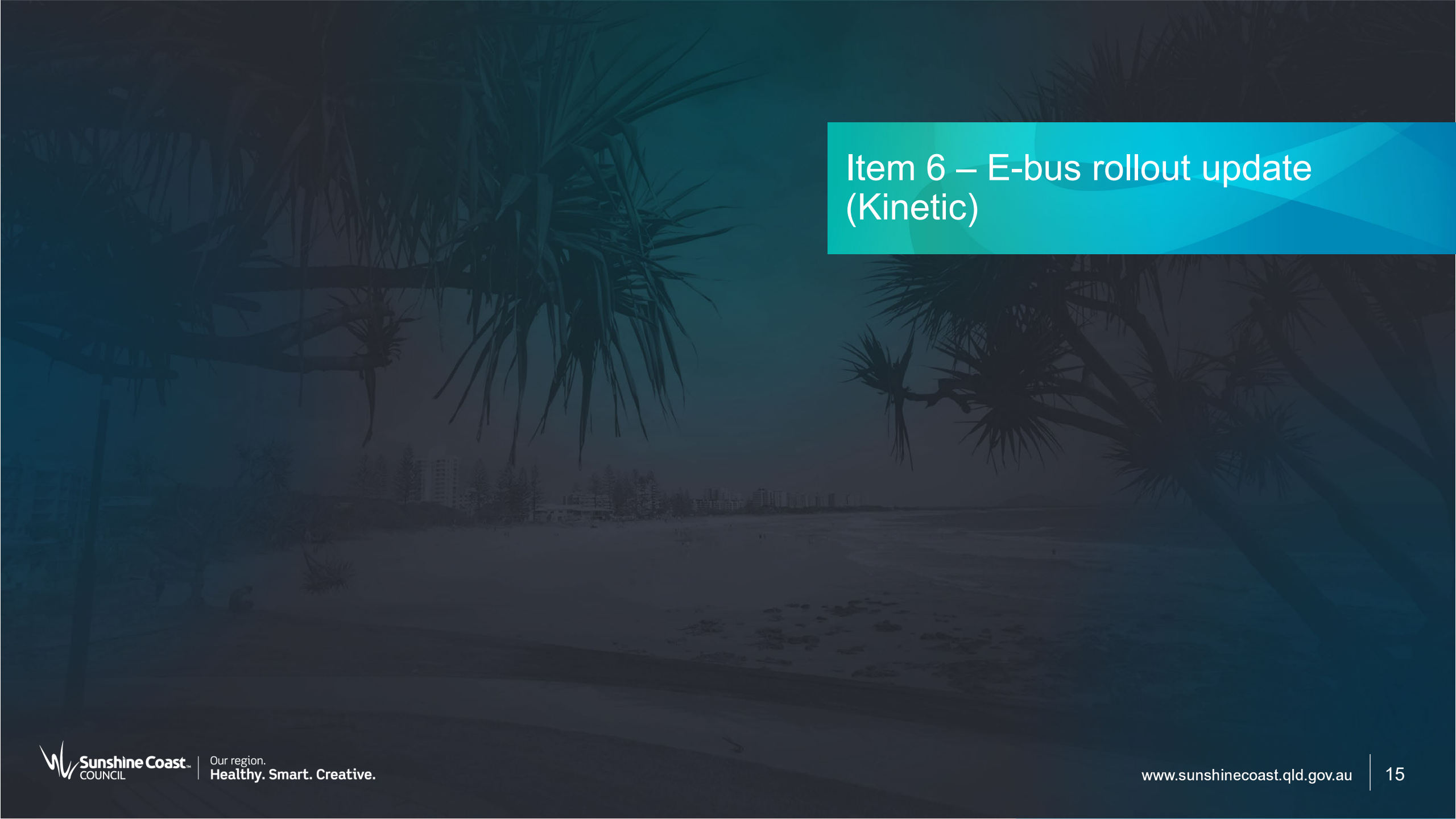


## Next steps for transport elements

1. Update the Strategic Framework and Transport and Parking Code in readiness for 1<sup>st</sup> State Interest Review (mid-2023)
2. Update the Planning Scheme Policy for Transport and Parking Code
3. Public consultation on draft Planning Scheme
4. Consideration of submissions and review
5. Ministerial review
6. Formal adoption and implementation



## Item 5 – E-scooter Law Changes and Trial for Sunshine Coast



## Item 6 – E-bus rollout update (Kinetic)



## Item 7 – General Business



# Possible future items for discussion

- Updating the Active Transport Plan (SCC)
- Coastal Management Strategies and impact for transport (SCC)
- Ridescore update (SCC)
- Household Travel Survey & Census results (SCC)
- Mobility and Autonomous Vehicles / Emerging Technologies (TCRG?)
- Optimising On-Street Parking (SCC)
- SEQ Regional Transport Plan – impacts/opportunities for region (SCC)
- ParkNGo update on usage and data (SCC)
- Gold Coast On-demand Transport Service (TMR)
- Free bus trial (SCC)
- Mass Transit update (SCC)
- Sunshine Coast Airport update (SCC)
- Transport roles and responsibilities (SCC)

## Agenda 24 May 2023

*TCRG preferences for May?*

*Any new item requests?*

# Thank you



[www.sunshinecoast.qld.gov.au](http://www.sunshinecoast.qld.gov.au)

[mail@sunshinecoast.qld.gov.au](mailto:mail@sunshinecoast.qld.gov.au)

T 07 5475 7272 F 07 5475 7277

Locked Bag 72 Sunshine Coast Mail Centre Qld 4560

 COUNCIL  Our region  
Healthy. Smart. Creative.

[www.sunshinecoast.qld.gov.au](http://www.sunshinecoast.qld.gov.au)