

Beerburrum to Nambour Rail Upgrade (B2N)

Sunshine Coast Council Transport Community Reference Group

Presented by: Melanie Dei Rossi, Project Director (B2N Rail Upgrade)

Department of Transport and Main Roads (TMR)



Acknowledgement of Traditional Owners and Elders

I'd like to begin by acknowledging the Traditional Owners of the land where we meet today. I would also like to pay my respects to the Elders both past and present.

I also extend that respect to the Aboriginal and Torres Strait Islander people here today.



'Travelling' by Gilimbaa

Today's presentation

- Project background
- Progress update
- Feedback & questions



Beerburum to Nambour Rail upgrade (B2N)

Where?

- Part of the North Coast Line (NCL), located on the Sunshine Coast

What?

- 39-kilometre single bi-directional rail line with passing loops at stations
- One of the few remaining sections of single track in Australia that carries commuter, long distance and freight trains

Key enabler of future public transport developments.





Track curves outside Glass House Mountains

Why the upgrade?

Insufficient capacity

- Single-track configuration
- Passing loops at stations only

Scheduling inefficiency

- Competition between freight and passenger services during peak periods

Ageing infrastructure

- Poor horizontal and vertical track alignments
- Numerous level crossings

Project benefits

The full scope of the B2N Stage 1 project will:

- increase freight and passenger rail capacity on this section of the NCL
- reduce travel times for freight and passenger services on rail networks
- help to divert traffic off the Bruce Highway
- provide a more integrated transport system with upgraded stations, as well as additional parking and improved bus/rail interchange facilities
- increase reliability for passenger services.

Passenger train at Landsborough station level crossing



Project funding

Stage 1 \$550.8 million

- Australian Government \$390 million
- Queensland Government \$160.8 million

Further funding required to complete future stages



Australian Government

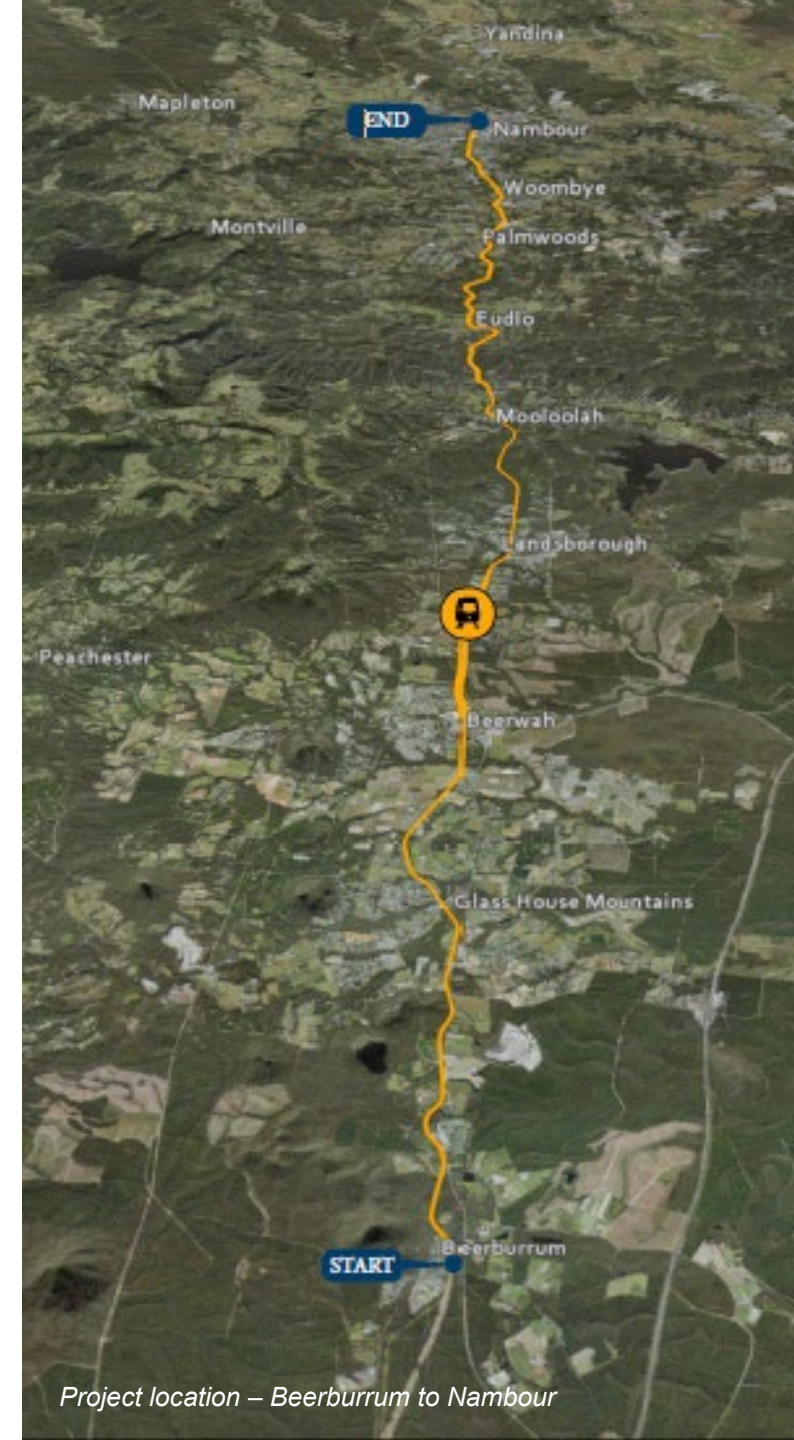


Queensland Government

Project deliverables

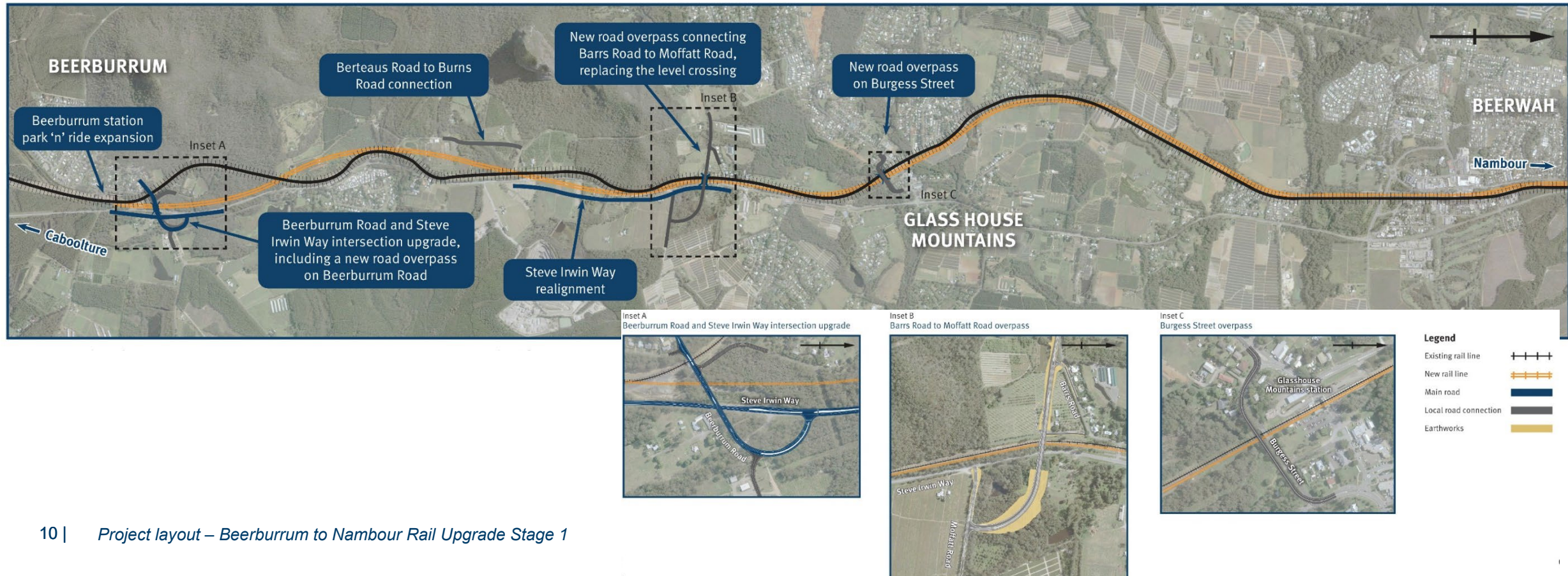
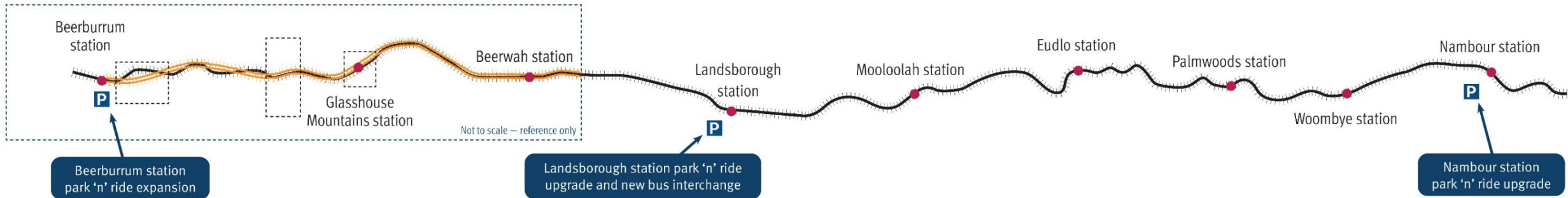
The B2N Stage 1 project will:

- duplicate a section of the North Coast Rail Line (NCL) between Beerburrum and Beerwah
- build three new bridges
- remove level crossings
- expand park 'n' ride facilities at Beerburrum, Landsborough and Nambour stations
- construct a new bus interchange at Landsborough station.

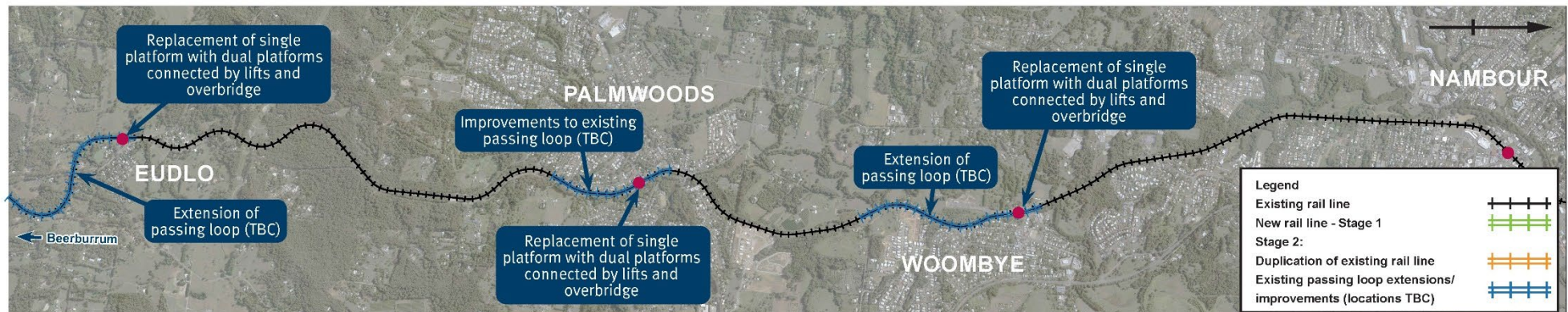
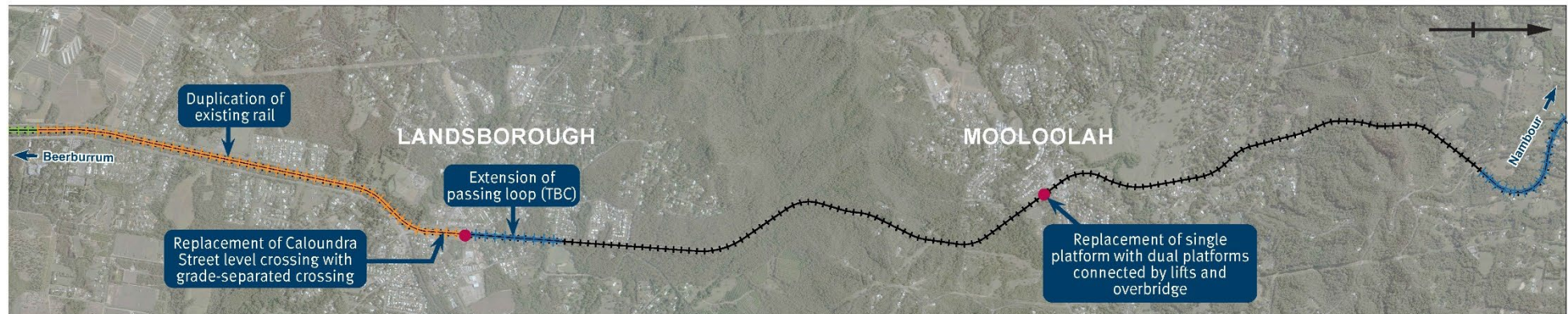
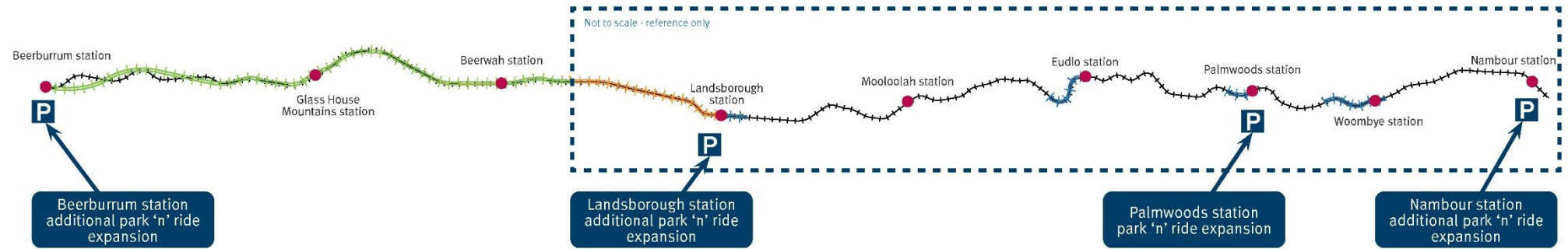


Project location – Beerburrum to Nambour

Project scope - Stage 1



Project scope – Future stages



Cultural and historical heritage

Kabi Kabi participation

TMR recognises the significance of different cultures and the importance of managing Indigenous, historical, shared and natural heritage.

TMR is committed to engaging respectfully on issues where the project impacts on country.

Kabi Kabi involvement and ways of working together to be agreed in Cultural Heritage Management Agreement.



Cultural and historical heritage

Indigenous Land Use Agreement (ILUA)

Operation of a railway on the former forestry lots at Beerburrum requires negotiation of an ILUA with the Native Title party, with the areas to be dedicated as a reserve for environmental purposes.

Cultural Heritage Management Agreement (CHMA)

TMR is developing a CHMA for the B2N project, which outlines the project's management process in relation to cultural heritage matters, including how the Kabi Kabi people will be involved in cultural heritage monitoring and protection activities.



Early Works - Steve Irwin Way realignment

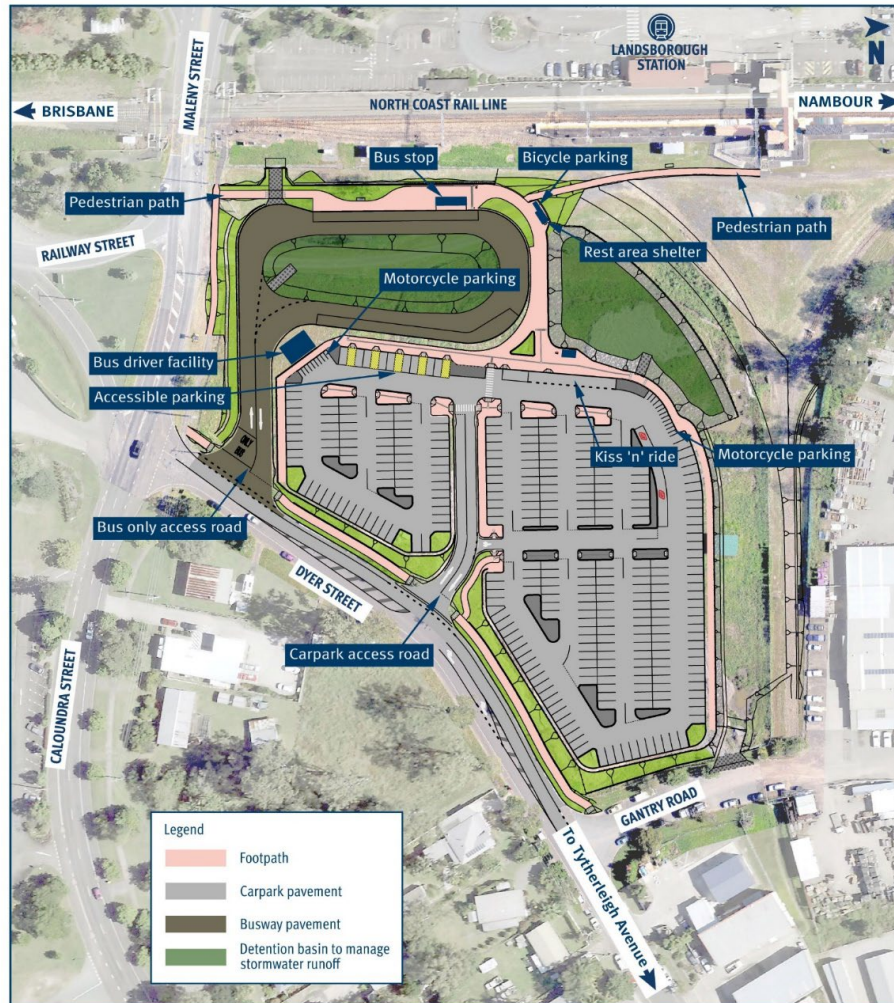
Due for completion July 2023



Drone video which highlights
most recent works along SIW

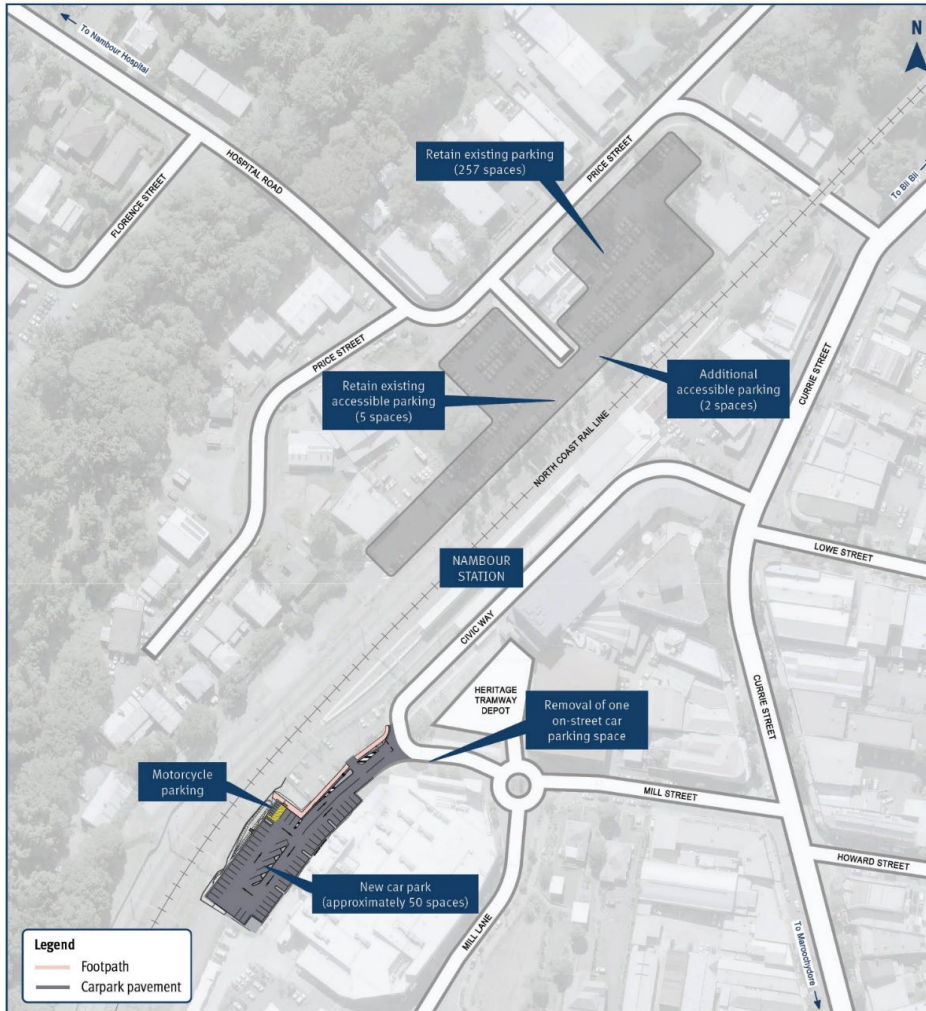
Early Works - Landsborough park 'n' ride

Due for completion June 2023



Early Works - Nambour park 'n' ride

Due for completion June 2023



An aerial photograph of a landscape. In the foreground, there is a large, rectangular field of young trees planted in neat rows. To the right of this field, a train with several colorful cars (red, blue, yellow) is traveling along a track that curves through a dense forest. Further to the right, a paved road with a few vehicles is visible. In the background, a large, prominent mountain with a flat top (a mesa) rises above the forest. Other smaller mountains are visible in the distance. The sky is filled with large, dark, dramatic clouds, with some blue patches visible on the left side.

Any questions?

Thank you and stay connected



TMRQld



@TMRQld



Department of Transport and Main Roads



TMRQld



<https://www.tmr.qld.gov.au/projects/beerburrum-to-nambour-rail-upgrade-stage-1>

13 QGOV (13 74 68)

www.tmr.qld.gov.au | www.qld.gov.au